



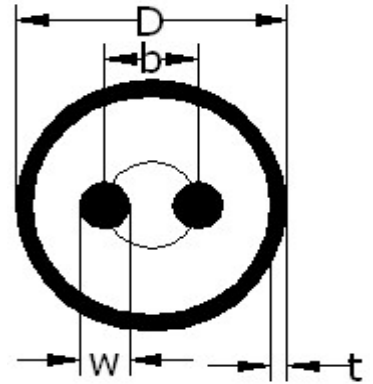
**MI Cable Technologies, Inc.**  
 Bay 5, 5905 - 11 Street SE, Calgary, Canada T2H 2A6  
 Tel: 403-571-8266  
 Fax: 403-571-8267  
 email: sales@micabletechnologies.com

Drawing # S-0100-01-06

ISO9001:2015  
 ISO17025:2017

## Simplex (2-wire) Thermocouple Cable Design Specification

Sheath Types	Thermocouple Types	MgO Purity
304	T	Standard (> 97%)
310	E	High Purity (> 99.4%)
316	J	
321	K	
347	N	
Inconel 600		
Inconel 601		
Incoloy 800		
Incoloy 825		
253MA		
Alloy TD		



**Additional Options**  
 IEC Class 1 or Class 2, ASTM Standard or Special Limits of Error, AMS2750 (NADCAP), Cryogenic (T-type only)

**Coil diameter**  
 Cable of 0.375" (9.5mm) or less in diameter supplied in 24" diameter coils, otherwise supplied in 54" diameter coils

D Cable Diameter	t Sheath Thickness	b Bolt Circle Diameter	W Wire Diameter	Nominal Coil Length	IR Test Voltage	Dielectric Test Voltage
0.059"	0.007"	0.018"	0.010"	2000'	500V	500V
(1.5mm)	(0.17mm)	(0.46mm)	(0.25mm)	(610m)		
0.063"	0.007"	0.019"	0.010"	2000'	500V	500V
(1.6mm)	(0.18mm)	(0.48mm)	(0.26mm)	(610m)		
0.079"	0.009"	0.025"	0.013"	2000'	500V	500V
(2.0mm)	(0.23mm)	(0.64mm)	(0.33mm)	(610m)		
0.118"	0.014"	0.037"	0.019"	2246'	500V	500V
(3.0mm)	(0.34mm)	(0.94mm)	(0.49mm)	(685m)		
0.125"	0.015"	0.039"	0.021"	2002'	500V	500V
(3.2mm)	(0.38mm)	(0.99mm)	(0.52mm)	(610m)		
0.177"	0.020"	0.055"	0.029"	998'	500V	750V
(4.5mm)	(0.52mm)	(1.40mm)	(0.74mm)	(304m)		
0.188"	0.022"	0.059"	0.031"	885'	500V	750V
(4.8mm)	(0.55mm)	(1.50mm)	(0.79mm)	(270m)		
0.236"	0.027"	0.074"	0.039"	562'	500V	1000V
(6.0mm)	(0.69mm)	(1.88mm)	(0.99mm)	(171m)		
0.250"	0.029"	0.078"	0.041"	500'	500V	1000V
(6.4mm)	(0.73mm)	(1.98mm)	(1.05mm)	(152m)		
0.313"	0.036"	0.098"	0.052"	319'	500V	1000V
(8.0mm)	(0.91mm)	(2.49mm)	(1.31mm)	(97m)		
0.375"	0.043"	0.118"	0.062"	222'	500V	1000V
(9.5mm)	(1.10mm)	(3.00mm)	(1.57mm)	(68m)		
0.425"	0.049"	0.133"	0.070"	173'	500V	1000V
(10.8mm)	(1.24mm)	(3.38mm)	(1.78mm)	(53m)		
0.500"	0.058"	0.157"	0.083"	125'	500V	1000V
(12.7mm)	(1.46mm)	(3.99mm)	(2.10mm)	(38m)		

Cable dimensions shown are nominal. Actual dimensions may vary within tolerance limits. Specifications subject to change without notice.